

RTBU EXPRESS



The Official Newsletter of the Rail Divisions of the RTBU Victorian Branch
VOL 9 | Issue 9 | Monday 8 Aug 2022



Vik Sharma
State Secretary

GAME ON!

The Commonwealth Games are coming to Victoria, but public transport workers and the disability community alike know we have a mammoth task ahead to ensure our network is properly staffed and up to scratch to meet international standards.

To build the strength of our voice, I have reached out to the Transport for All coalition and convened the first of many meetings aimed at engaging our wider community and driving action for change.

The Transport for All coalition is a group of disability advocates with a keen interest in transport. The RTBU has been working with this group to help establish themselves and make their voice louder as we campaign for a better and accessible to all public transport system, and we're off to a strong start!

2026 is set to be the first regional Commonwealth Games, held under a multi-city model with hubs in Geelong, Bendigo, Ballarat and Gippsland. But getting there for the entire community might become an issue.

I will be taking up this fight to secure the long-term future of all staff in public transport. These games are our opportunity not to be missed to bring the key changes our network needs – and always with people at its heart!

As public transport workers we all proudly want to see better journeys for everyone. Better journeys mean less disgruntled passengers, fewer headaches and a better working experience.

Recognising these factors, RTBU campaigning has put the government and operators on notice regarding the improvements that are long overdue. This includes much more than the infrastructure upgrades and require a strong focus on the ongoing staffing, training and funding shortages in key areas. An undeniable fact is that RTBU members will play a critical role in ensuring smooth multi-modal commute to different venues of the games. Without them, games cannot be successful.

We're all aware of the issues we encounter every day – automated announcements saying the wrong thing, platform gaps, damaged surfaces,

poorly accessible access between platforms or giant steps up into trams – and we know we need to tighten the screws and take this opportunity to demand more of the government.

Over the coming months I will be reaching out to members across the network to help build our demands of government as we continue our collaborations with the wider community. I firmly believe that by getting transport workers a seat at the table, working with the most vulnerable in our community we can achieve great things for our collective.

Working together we are stronger, and these games are our golden opportunity.

Vik Sharma
Victorian Branch Secretary



RTBU
The power of Union

Operations | Infrastructure | Workshops | Salaried
rtbuvic.com.au | (03) 8630 9100

Level 2, 365 Queen Street, Melbourne, VIC 3000 rtbu@rtbuvic.com.au F 03 8630 9122





Victor Moore

President of the Administration, Supervisory,
Technical and Professional Division

BARRIER SAFETY

It's been a busy month in Metro stations, with several significant campaigns underway.

Probably the most urgent of these has been the recent campaign over Member safety at barriers.

Metro Trains, with little understanding of the station safety issues, handed down directions pressuring stations to keep barriers closed across the network.

This has resulted in PIN notices issued and WorkSafe Inspectors attending a number of stations.

In response, management have begun playing the old divide and rule tactic.

Stations are ranked based by highest to lowest percentage of barrier closures.

Stations (and by default the staff at those stations) are then ranked by colour - with stations with the lower barrier closures appearing in red.

Management love trumpeting their rankings around the network, seeking to pit station against

station and worker against worker.

As a result of these measures, station staff have reported ongoing threats and abuse at the barriers.

RTBU Station Delegates have supported a number of HSR's during a recent meeting held at St Albans Station, where management have not engaged in proper consultation with the station staff impacted or the HSR's over the risks and the controls around the closure of barriers at this station.

Station staff have continued to report ongoing threats made to them.

HSR's issued three PIN notices for St Albans Station and three PIN notices for North Melbourne concerning Metro's lack of consultation, as well as the barrier closure direction impacting the safety and welfare of the station staff.

Over the last week, Worksafe inspectors attended North Melbourne and St Albans

Stations.

The local HSR's, with support from the RTBU, put a lot of work into representing their Designated Work Group (DWG), and have successfully achieved outcomes that will:

- see local risk assessments and/or reviews of Metro managements risk document at these stations
- HSR's will be able to request more detailed documentation on the trends of assaults
- HSR's provided with updates on training progress for station staff in their own areas around conflict resolution-MYBO training

The PIN Notices were subsequently withdrawn by the HSR's, following progress on these issues.

Prior to this the RTBU held a successful online forum for Members, HSR's and Delegates with Martin Raspin from the Victorian Trades Hall Council Safety unit over the Occupational Violence experienced by station staff.



Contact us

rtbuvic.com.au
(03) 8630 9100

Level 2, 365 Queen Street,
Melbourne, VIC 3000

E rtbu@rtbuvic.com.au
F 03 8630 9122

State Secretary
Vik Sharma

Infrastructure Division
Secretary: Jon Saw

Admin & Salaried Division
Secretary: Steven Kozmevski

Rail Operations Division
Secretary: Darren Galea

Workshops Division
Secretary: Paul Jumpertz

**Infrastructure, Workshops
& Labour Hire**
Organiser: Bryan Evans
Organiser: Joe Dennis

Industrial Officer
Amanda Swayn

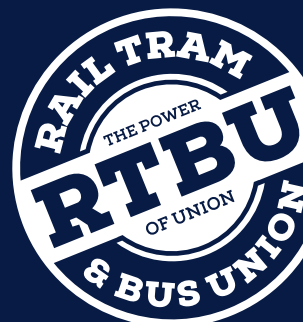
**Operations & Admin
Organiser**
Sally Van Bragt



@rtbuvic



/RTBUvic/



The forum dealt with a number of critical safety issues, including psychological injuries that occur over time due to low level aggression (such as threats, verbal abuse etc) towards the staff member, and the significant effect this can have.

These wide ranging discussions resulted in many members giving direct feedback on the difficulties they face at work as a result of Metro's barrier direction.

Further online safety forums are planned soon as a result of the interest shown by members.

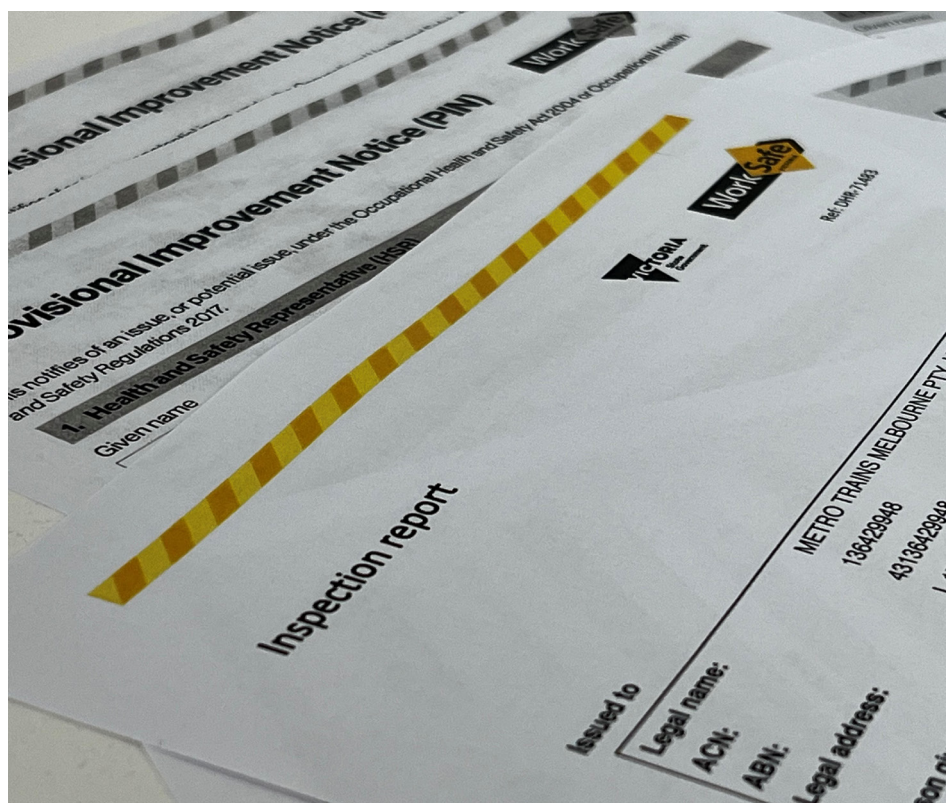
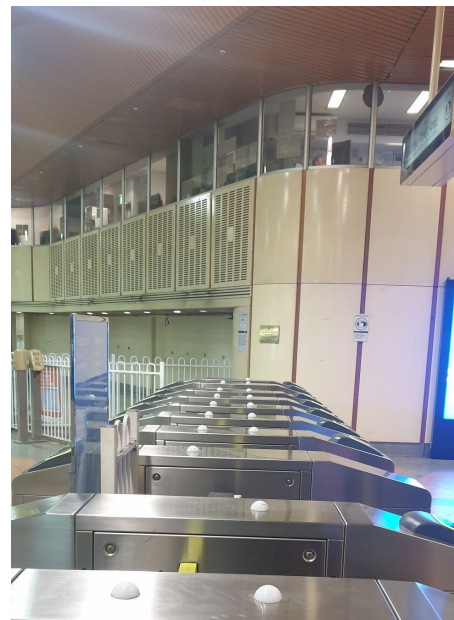
The RTBU has also continued to visit barrier stations, with further visits planned and currently occurring.

In other safety related matters, following an assault on a Station Staff Member at Frankston Station, the RTBU arranged a meeting onsite with management, the HSR and the RTBU Delegate to review the incident and what issues needed to be addressed.

This was done under Metro Operations EA - Section 3.28, which clearly sets out the process to be followed.

As a result of the discussions, several matters came to light including lack of PSO presence, the need for clearing of trains to be done in pairs, that Frankston control desk must be staffed and that members should continue to report, whilst management must prioritise following up on INX reports.

If you are having any safety issues at your station, don't hesitate to reach out to your local Delegate, HSR or Organiser.





Joe Dennis

Organiser

SAFETY IS UNION BUSINESS

Over the last few months in rail projects there have been several concerning safety breaches. In as many months, we have sadly seen the loss of two lives on these projects due to unsafe practices and conditions.

This is a reminder to all Members to always prioritise the safety of yourself and fellow workers on site. If you're instructed to work in a way that makes you feel unsafe, contact your HSR, Delegate, Shop Steward or Organiser.

As a response to safety concerns, companies have been conducting "hazard assessments" to determine what they consider to be compliant and safe.

However, these assessments are not conducted with the relevant workgroups HSR/Shop Stewards as is the standard practice.

On several occasions when out on site I have questioned the validity of these assessments as they have missed several risks that need to be considered and acted upon to make the site safe.

I have even experienced so called "Safety Managers" writing in risks after the risk assessment was completed and work on site had already begun.

It was only when work was stopped by union representatives, and the risk assessment were questioned, that they finally recognised the

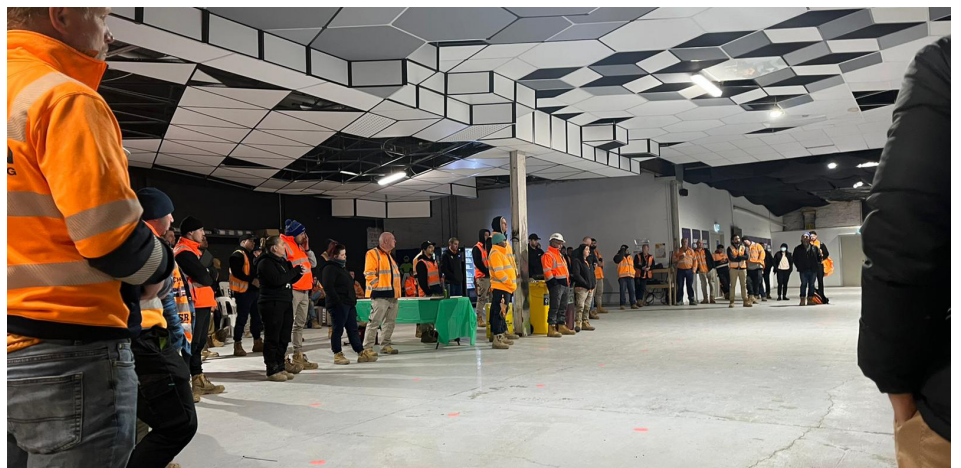
danger and attempted to cover it up.

To me, this shows a disregard for the safety of workers.

If you have concerns that your site is putting your safety at risk, please don't wait to contact your shop steward or organiser.

There is nothing more important than every member arriving home safe at the end of the day.

If you have any issues you want to discuss, or if you want to arrange a pre start or site visit, please call me on 0403 863 869.



Contact us

rtbuvic.com.au
(03) 8630 9100

Level 2, 365 Queen Street,
Melbourne, VIC 3000

E rtbu@rtbuvic.com.au
F 03 8630 9122

State Secretary
Vik Sharma

Infrastructure Division
Secretary: Jon Saw

Admin & Salaried Division
Secretary: Steven Kozmevski

Rail Operations Division
Secretary: Darren Galea

Workshops Division
Secretary: Paul Jumpertz

**Infrastructure, Workshops
& Labour Hire**
Organiser: Bryan Evans
Organiser: Joe Dennis



@rtbuvic



/RTBUvic/

Industrial Officer
Amanda Swayn

**Operations & Admin
Organiser**
Sally Van Bragt

