

REDUCING RAIL WORKPLACE RISKS



GENERAL STRATEGIES:

- If you're not well – don't come to work and don't travel.
- If you're at work wash your hands frequently with soap and water/hand sanitiser.
- Maintain 1.5 metres physical distancing.
- Demand and utilise appropriate PPE.

YOUR EMPLOYER HAS RESPONSIBILITY TO:

- If physical distancing can't be maintained, agreed protection must be in place.
- Do not wear masks which are not PPE grade.
- Tasks must be Risk Assessed and Safe Systems of Work created and agreed with RTBU representatives according to specific circumstances in order to protect staff and public from the current pandemic emergency.
- Risk Assessments and revised Safe Systems of Work may mean that PPE is required in order to protect the wearer.
- The work environment is adequately cleaned and deep cleans are performed in areas of outbreaks or known cases.
- Appropriate PPE must be adequate, available and easily accessible

RTBU ADVICE TO MEMBERS

- Remember if you are placed in any situation where you feel your health and safety is not protected, you have a legal right to take yourself to a place of safety.
- The RTBU will protect your rights. We will continue to fight for your safety and will provide any necessary ongoing support and representation.
- Talk to your RTBU Delegate or HSR about any concerns. We're here for you.

If you're not in the RTBU, now is the time to join. These are unprecedented times and we're here to protect your job and your safety. Join at rtbuvic.com.au/join

REDUCING TRAM WORKPLACE RISKS



GENERAL STRATEGIES:

- If you're not well – don't come to work and don't travel.
- If you're at work wash your hands frequently with soap and water/hand sanitiser.
- Maintain 1.5 metres physical distancing.
- Demand and utilise appropriate PPE.

YOUR EMPLOYER HAS RESPONSIBILITY TO:

- If physical distancing can't be maintained, agreed protection must be in place.
- Do not wear masks which are not PPE grade.
- Tasks must be Risk Assessed and Safe Systems of Work created and agreed with RTBU representatives according to specific circumstances in order to protect staff and public from the current pandemic emergency.
- Risk Assessments and revised Safe Systems of Work may mean that PPE is required in order to protect the wearer.
- The work environment is adequately cleaned and deep cleans are performed in areas of outbreaks or known cases.
- Appropriate PPE must be adequate, available and easily accessible

RTBU ADVICE TO MEMBERS

- Remember if you are placed in any situation where you feel your health and safety is not protected, you have a legal right to take yourself to a place of safety.
- The RTBU will protect your rights. We will continue to fight for your safety and will provide any necessary ongoing support and representation.
- Talk to your RTBU Delegate or HSR about any concerns. We're here for you.

If you're not in the RTBU, now is the time to join. These are unprecedented times and we're here to protect your job and your safety. Join at rtbuvic.com.au/join

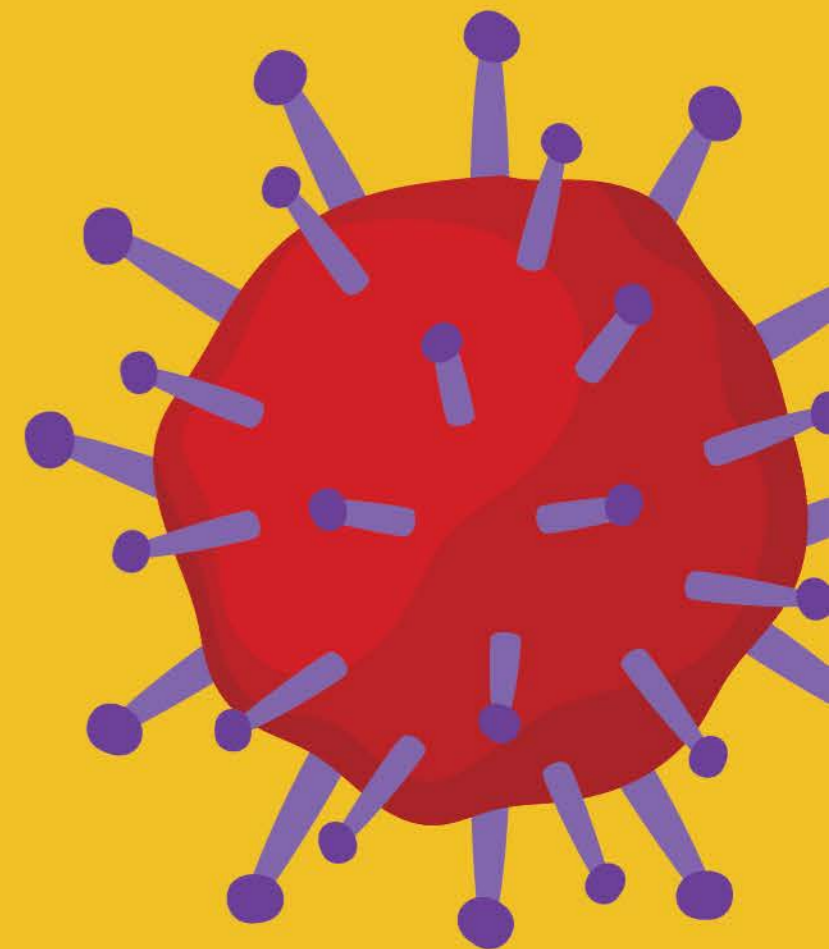


WEAR

A

MASK

ON THE TRAIN



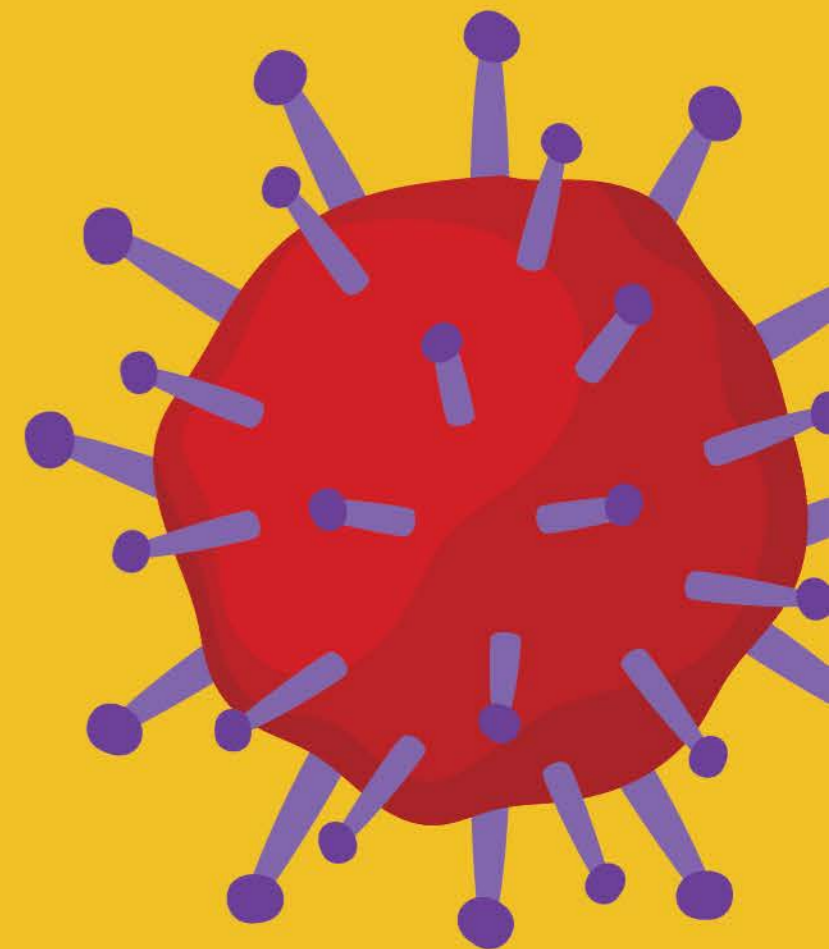


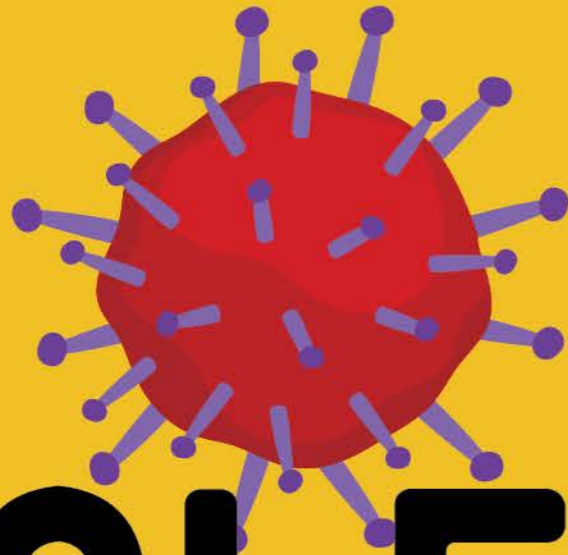
WEAR

A

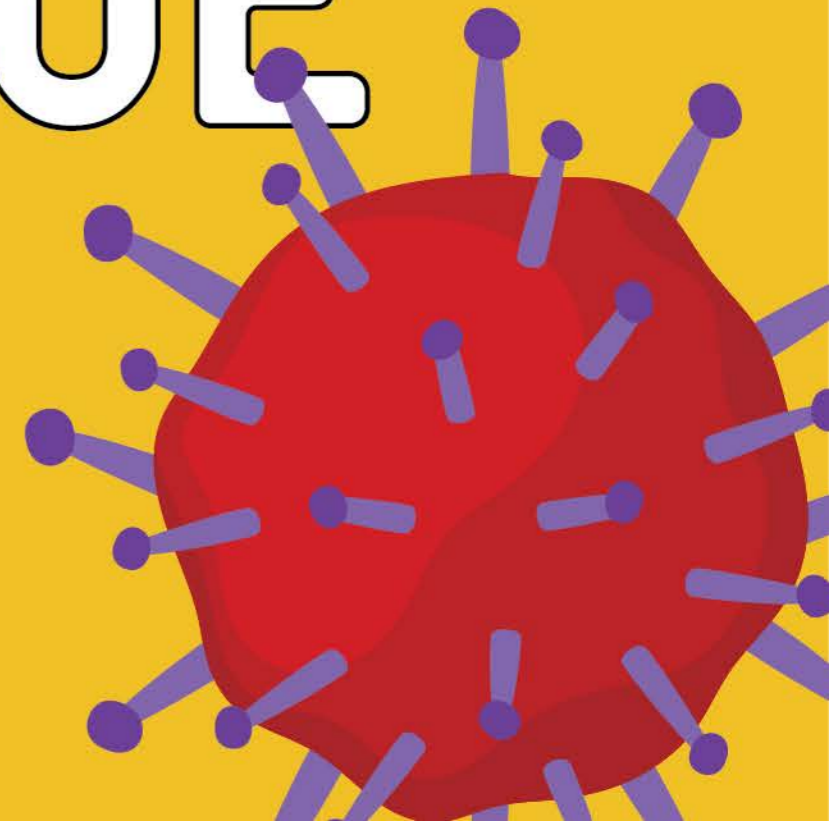
MASK

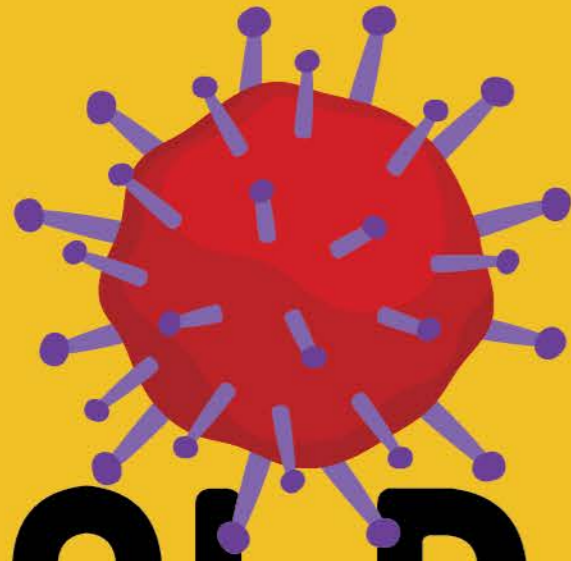
ON THE TRAM





CLEANING IS A
SAFETY ISSUE





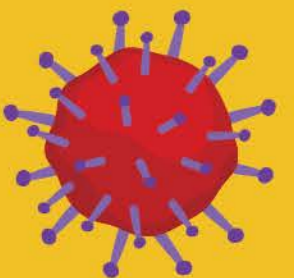
HOLD MANAGEMENT

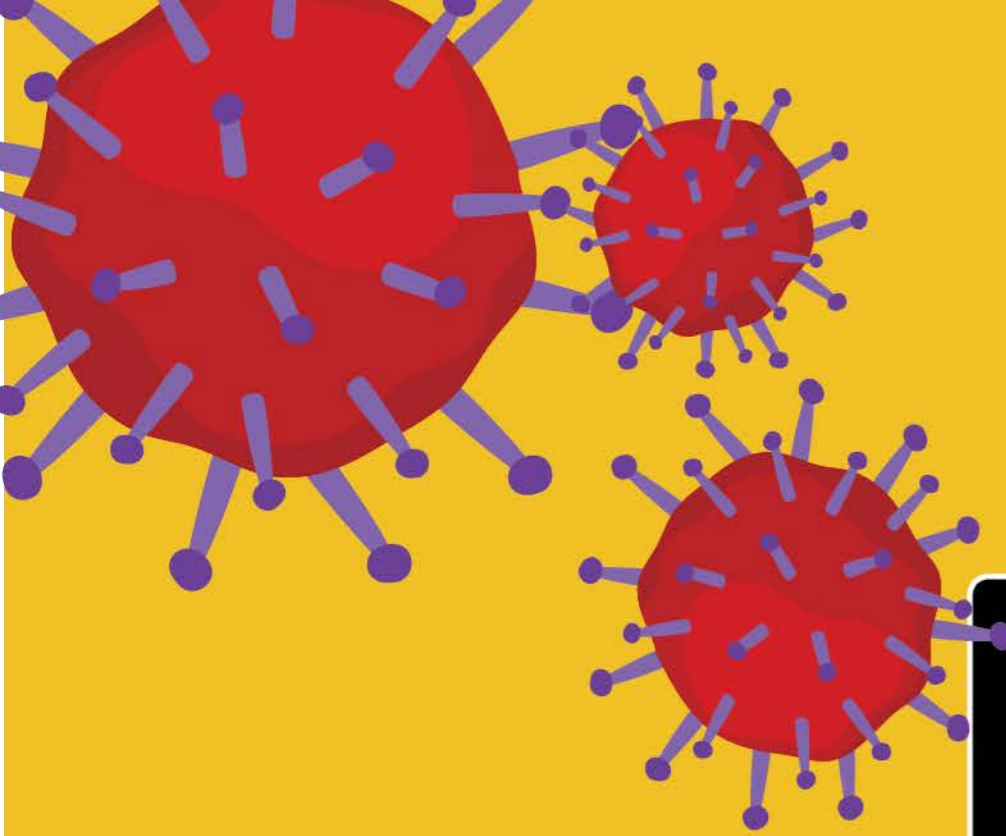
ACCOUNTABLE

RECORD & REPORT ISSUES

RTBU

The power of Union





**SUPPORT
FRONTLINE
TRANSPORT
WORKERS**



RTBU
The power of Union